



中国认可
国际互认
检测
TESTING
CNAS L0095

TEST REPORT

No.: RZRS2016-0114(XG1)

Client : JF Polymers (Suzhou) Co. Ltd.
Address: Haicheng Industrial Park, Bldg 7, Changshu Economic and Technological Zone, Changshu, Jiangsu, China

Receiving Date : November 11, 2016 Completing Date : December 16, 2016

Test Sample : Polysher Type/Model : P001

Sample description : Trademark: Polymaker

Test Items : The content of Lead,Cadmium,Mercury,Hexavalent Chromium,PBBs,PBDEs

Test Method : IEC 62321-2:2013, IEC 62321-3-1:2013, IEC 62321-5:2013, IEC 62321-6:2015, IEC 62321-7-1:2015

Test Conclusion :	According as	Conclusion
	Directive 2011/65/EU (RoHS)	Pass

Lu Yating

Yao Huamin

Xia Qingyun

Tested by: *Lu Ya Ting*

Reviewed by: *Yao Huamin*

Approved by: *Xia Qingyun*

Date of issue: February 09, 2017
Seal of CVC



威凯检测技术有限公司

Vkan Certification & Testing Co., Ltd

List of Apparatus					
No.	Test Instrument	Type	Number	Period of Calibration Validity	Used (√)
1.	X-ray fluorescence spectrometer	NDA 300	VGDY-0219	2016.07.11-2017.07.10	√
2.	Analytical Balance	290-9244/S404A	WKIA-0011	2016.01.21-2017.01.20	√
3.	Ultraviolet Spectrophotometer	Lambda 35	JB-0036	2016.04.14-2017.04.13	√
4.	Inductively Coupled Plasma Optical Emissions Spectroscopy (ICP-OES)	Optima 8300	VGDY-0137	2015.03.13-2017.03.13	√
5.	Gas Chromatography Mass Spectrograph (GC-MS)	Trace1300/ISQ QD-300	CL-000363	2016.11.15-2017.11.14	√

Material list

Table 1

Component No.	Component name	Specimen No.	Specimen name
1	Black plastic tray	1	Black plastic tray
2	Hose	2-1	Hose - blue rubber
		2-2	Hose - Transparent plastic
3	Power cord	3-1	Power cord - plug cover
		3-2	Power cord - plug under cover
		3-3	Power Cord - Plug Insert
		3-4	Power cord - white plastic sheet
		3-5	Power cord - yellow tape
		3-6	Power cord - black skin 1
		3-7	Power cord - copper wire
		3-8	Power cord - black skin 2
		3-9	Power cord - copper wire 2
		3-10	Power cord - black plastic
		3-11	Power Cord - Pigtail Plastic
		3-12	Power Cord - Plug Metal
		3-13	Power cord - tail plug
		3-14	Power Cord - Black plastic inside the plug
4	Label	4	label
5	Foot pad	5	Foot pad
6	Bottom shell	6	Bottom shell
7	Panel	7-1	Panel - Coating
		7-2	Panel - brown transparent plastic
8	Rubber button	8	Rubber button
9	Base	9	Base
10	Transparent plastic cover	10	Transparent plastic cover
11	Black plastic	11	Black plastic
12	Support rod	12	Support rod

Component No.	Component name	Specimen No.	Specimen name
13	Black	13	Black plastic
14	Black	14	Black plastic
15	Black	15	Black plastic
16	Black	16	Black plastic
17	Black	17	Black plastic
18	Black	18	Black plastic
19	Black	19	Black plastic
20	Cover	20	Cover
21	Cover	21	Black plastic
22	Black plastic	22	Black plastic
23	Black plastic	23	Black plastic
24	Black plastic block	24-1	Black plastic block - black tape
		24-2	Black plastic block - Black coating
		24-3	Black plastic block - transparent film
		24-4	Black plastic block - black plastic
25	Pressure plate	25	Pressure plate
26	Milky white apron	26	Milky white apron
27	Milky white apron	27	Milky white apron
28	Black rubber ring	28	Black rubber ring
29	Transparent plastic	29	transparent plastic
30	Transparent plastic	30	transparent plastic
31	Fan	31-1	Fan-label
		31-2	Fan - bracket
		31-3	Fan - fan blades
		31-4	Fan - magnetic plastic
		31-5	Fan - metal ring coating
		31-6	Fan - metal ring substrate
		31-7	Fan - White washer

Component No.	Component name	Specimen No.	Specimen name
31	Fan	31-8	Fan - orange apron
		31-9	Fan - Silver metal
		31-10	Fan - yellow metal
		31-11	Fan - copper wire
		31-12	Fan - metal ring
32	Motor 1	32-1	Motor 1 - tag
		32-2	Motor 1 - shell gray coating
		32-3	Motor 1 - Housing Substrate
		32-4	Motor 1 - metal pin 1
		32-5	Motor 1 - metal pin 2
		32-6	Motor 1 - Sheet metal
		32-7	Motor 1 - Magnet
		32-8	Motor 1 - plastic gears
		32-9	Motor 1 - white plastic ring
		32-10	Motor 1 - white plastic
		32-11	Motor 1 - meter yellow plastic
		32-12	Motor 1 - copper wire
33	Motor 2	33-1	Motor 2 - plastic buckle
		33-2	Motor 2 - White housing
		33-3	Motor 2 - Lubricating oil
		33-4	Motor 2 - light green gear
		33-5	Motor 2 - white gear
		33-6	Motor 2 - meter yellow gear
		33-7	Motor 2 - khaki gear
		33-8	Motor 2 - meter yellow plastic
		33-9	Motor 2 - white washer
		33-10	Motor 2 - orange apron
		33-11	Motor 2 - Black ring

Component No.	Component name	Specimen No.	Specimen name
33	Motor 2	33-12	Motor 2 - solder
		33-13	Motor 2 - copper ring 1
		33-14	Motor 2 - copper ring 2
		33-15	Motor 2 - yellow metal
		33-16	Motor 2 - capacitor body
		33-17	Motor 2 - capacitance pin
		33-18	Motor 2 - metal pin 1
		33-19	Motor 2 - Metal pin 2
		33-20	Motor 2 - Metal strip
		33-21	Motor 2 - magnet
		33-22	Motor 2 - metal shell
		33-23	Motor 2 - enameled wire color paint
		33-24	Motor 2 - enameled copper wire
		33-25	Motor 2 - metal sheet
34	Shaft	34-1	Shaft - brown apron
		34-2	Shaft - metal ring
		34-3	Shaft - metal ring 2
		34-4	Shaft - ball
		34-5	Shaft - lubricating oil
35	Component 1	35-1	Component 1 - black plastic 1
		35-2	Component 1 - black plastic 2
		35-3	Component 1 - black plastic 3
		35-4	Component 1 - White fibers
		35-5	Component 1 - spring
		35-6	Component 1 - apron
		35-7	Component 1 - solder
		35-8	Component 1 - Sheet metal
36	Component 2	36-1	Component 2 - Metal pin
		36-2	Component 2 - Silver metal

Component No.	Component name	Specimen No.	Specimen name
36	Component 2	36-3	Component 2 - yellow metal
		36-4	Component 2 - metal rod
		36-5	Component 2 - Black plastic
37	Wire assembly	37-1	Wire assembly - Wire 1 red shell
		37-2	Wire assembly - Wire 1 black skin
		37-3	Wire assembly - Wire 1 Copper Wire
		37-4	Wire assembly- Wire 2 black sheath
		37-5	Wire assembly- Wire 2 blue skin
		37-6	Wire assembly- Wire 2 flesh-colored skins
		37-7	Wire assembly- Wire 2 Yellow skin
		37-8	Wire assembly- Wire 2 red shell
		37-9	Wire assembly- Wire 2 to copper wire
		37-10	Wire assembly- Wire 2 Connector Plastic
		37-11	Wire assembly- Wire 2 Connector Pin
		37-12	Wire assembly- Wire 3 black skin
		37-13	Wire assembly- Wire 3 red shell
		37-14	Wire assembly- Wire 3 to copper wire
		37-15	Wire assembly- Wire 3 Connector Plastic
		37-16	Wire assembly- Wire 3 Connector Pin
		37-17	Wire assembly- Wire 4 black skin
		37-18	Wire assembly- Wire 4 red shell
		37-19	Wire assembly- wire 4 to copper wire
		37-20	Wire assembly- Wire 4 Connector Plastic
		37-21	Wire assembly- Wire 4 Connector Pin
		37-22	Wire assembly- Wire 5 Purple Skin

Component No.	Component name	Specimen No.	Specimen name
37	Wire assembly	37-23	Wire assembly- Wire 5 gray skin
		37-24	Wire assembly- wire 4 to copper wire
		37-25	Wire assembly- Wire 5 Connector Plastic
		37-26	Wire assembly- Wire 5 Connector Pin
		37-27	Wire assembly- Wire 6 with cable ties
		37-28	Wire assembly- Wire 6 Black Outer (Large)
		37-29	Wire assembly- Wire 6 Black Outer (Small)
		37-30	Wire assembly- LINE 6 red shell
		37-31	Wire assembly- Wire 6 white shell
		37-32	Wire assembly- Wire 6 green shell
		37-33	Wire assembly- Wire 6 Copper Wire
		37-34	Wire assembly- Wire 6 White Glue
		37-35	Wire assembly- Wire 6 Connector Plastic
		37-36	Wire assembly- Wire 6 Connector Pin
		38	PCB board assembly
38-2	PCB board assembly - PCB1 resin		
38-3	PCB board assembly-PCB1 copper		
38-4	PCB board assembly - PCB1 Pin		
38-5	PCB board assembly - PCB2U body		
38-6	PCB board assembly - PCB2U pin		
38-7	PCB board assembly - PCB2 green coating		
38-8	PCB board assembly - PCB2 resin		

Component No.	Component name	Specimen No.	Specimen name
38	PCB board assembly	38-9	PCB board assembly-PCB2 copper
		38-10	PCB board assembly-PCB2 solder
		38-11	PCB board assembly-PCB3H1 black plastic
		38-12	PCB board assembly-PCB3H1 pin
		38-13	PCB board assembly-PCB3 green coating
		38-14	PCB board assembly - PCB3 resin
		38-15	PCB board assembly-PCB3 copper
		38-16	PCB board assembly - PCB3 solder
		38-17	PCB board assembly-PCB4H1 black plastic
		38-18	PCB board assembly - PCB4H1 pin
		38-19	PCB board assembly-PCB4J1 black plastic
		38-20	PCB board assembly-PCB4J1 pin
		38-21	PCB board assembly-PCB4LED1 black apron
		38-22	PCB board assembly-PCB4LED1 black plastic
		38-23	PCB board assembly - PCB4LED1 Body
		38-24	PCB board assembly - PCB4LED1 Pin
		38-25	PCB board - PCB4 green coating
		38-26	PCB board assembly - PCB4 resin
		38-27	PCB board assembly-PCB4 copper
		38-28	PCB board assembly-PCB4 solder
38-29	PCB board assembly-PCB5J2 white plastic		

Component No.	Component name	Specimen No.	Specimen name
38	PCB board assembly	38-30	PCB board assembly - PCB5J2 pin
		38-31	PCB board assembly - PCB5 connector black plastic
		38-32	PCB board assembly - PCB5 connector pins
		38-33	PCB board assembly - PCB5 connector pins
		38-34	PCB board assembly - PCB5 green coating
		38-35	PCB board assembly - PCB5 resin
		38-36	PCB board assembly-PCB5 copper
		38-37	PCB board assembly - PCB5 solder
		38-38	PCB board assembly-PCB6H1 black plastic
		38-39	PCB board assembly-PCB6H1 pin
		38-40	PCB6H2-4 white plastic
		38-41	PCB6H2-4 pin
		38-42	PCB board assembly-PCB6S1 blue plastic
		38-43	PCB board assembly-PCB6S1 black plastic
		38-44	PCB board assembly-PCB6S1 metal sheet
		38-45	PCB board assembly-PCB6S1 spring
		38-46	PCB board assembly - PCB6S1 Pin
		38-47	PCB board assembly - PCB6 green coating
		38-48	PCB board assembly-PCB6 resin
		38-49	PCB board assembly-PCB6 copper
		38-50	PCB board assembly-PCB6 solder
38-51	PCB board assembly-PCB7J1 white plastic		

Component No.	Component name	Specimen No.	Specimen name
38	PCB board assembly	38-52	PCB board assembly-PCB7J1 pin
		38-53	PCB board assembly-PCB7S1 black plastic
		38-54	PCB board assembly-PCB7S1 spring
		38-55	PCB board assembly-PCB7S1 pin
		38-56	PCB board assembly-PCB7 green coating
		38-57	PCB board assembly-PCB7 resin
		38-58	PCB board assembly-PCB7 copper
		38-59	PCB board assembly - PCB7 solder
		38-60	PCB81-2 white plastic
		38-61	PCB81-2 pin
		38-62	PCB8LED1-8 body
		38-63	PCB8LED1-8 pin
		38-64	PCB board assembly - PCB8 patch R
		38-65	PCB board assembly-PCB8 green coating
		38-66	PCB board assembly - PCB8 resin
		38-67	PCB board assembly-PCB8 copper
		38-68	PCB board assembly-PCB8 solder
		38-69	PCB board assembly-PCB9J1 / 2/4 white plastic
		38-70	PCB board assembly - PCB9J1 / 2/4 pins
		38-71	PCB board assembly-PCB9J3 / 5 black plastic
		38-72	PCB board assembly - PCB9J3 / 5 Pin
		38-73	PCB board assembly-PCB9C3 / 14 black skin
		38-74	PCB board assembly-PCB9C3 /

Component No.	Component name	Specimen No.	Specimen name
			14 metal housing
38	PCB board assembly	38-75	PCB board assembly - PCB9C3 / 14 electrolyte
		38-76	PCB board assembly-PCB9C3 / 14 cathode
		38-77	PCB board assembly-PCB9C3 / 14 negative
		38-78	PCB board assembly - PCB9C3 / 14 Pin
		38-79	PCB board assembly-PCB9C3 / 14 black rubber
		38-80	PCB board assembly - PCB9C3 / 14 black plastic
		38-81	PCB9L1-3 black skin
		38-82	PCB9L1-3 skeleton
		38-83	PCB9L1-3 copper wire
		38-84	PCB9L1-3 pin
		38-85	PCB9S1-4 black plastic
		38-86	Green plastic
		38-87	PCB9S1-4 square metal
		38-88	PCB9S1-4 round metal
		38-89	PCB9S1-4 pin
		38-90	PCB board assembly-PCB9SP1 black shell
		38-91	PCB board assembly-PCB9SP1 metal sheet
		38-92	PCB board assembly-PCB9SP1 silver metal
		38-93	PCB board assembly-PCB9SP1 magnet
		38-94	PCB board assembly-PCB9SP1 copper wire
38-95	PCB board assembly - PCB9SP1 pin		
38-96	PCB9U1-5 body		
38-97	The PCB9U1-5 pin		
38-98	PCB board assembly - PCB9 patch R		
38-99	PCB board assembly - PCB9		

Component No.	Component name	Specimen No.	Specimen name
			patch C
38	PCB board assembly	38-100	PCB board assembly - PCB9 patch F
		38-101	PCB board assembly - PCB9 patch Q.
		38-102	PCB board assembly - PCB9 patch D
		38-103	PCB board assembly - PCB9 patch TVS
		38-104	PCB board assembly-PCB9 SMD LED
		38-105	PCB board assembly-PCB9 green coating
		38-106	PCB board assembly - PCB9 resin
		38-107	PCB board assembly-PCB9 copper
		38-108	PCB board assembly-PCB9 solder
		38-109	PCB board assembly - PCB10C1 / 2/4/8/9 outer skin
		38-110	PCB board assembly - PCB10C1 / 2/4/8/9 metal case
		38-111	PCB board assembly - PCB10C1 / 2/4/8/9 electrolyte
		38-112	PCB board assembly-PCB10C1 / 2/4/8/9 cathode
		38-113	PCB board assembly - PCB10C1 / 2/4/8/9 negative
		38-114	PCB board assembly - PCB10C1 / 2/4/8/9 pins
		38-115	PCB board assembly-PCB10C1 / 2/4/8/9 black rubber
		38-116	PCB board assembly-PCB10CY blue shell
		38-117	PCB board assembly - PCB10CY main body
		38-118	PCB board assembly - PCB10CY pin
		38-119	PCB10L1-3 black skin
38-120	PCB10L1-3 yellow tape		

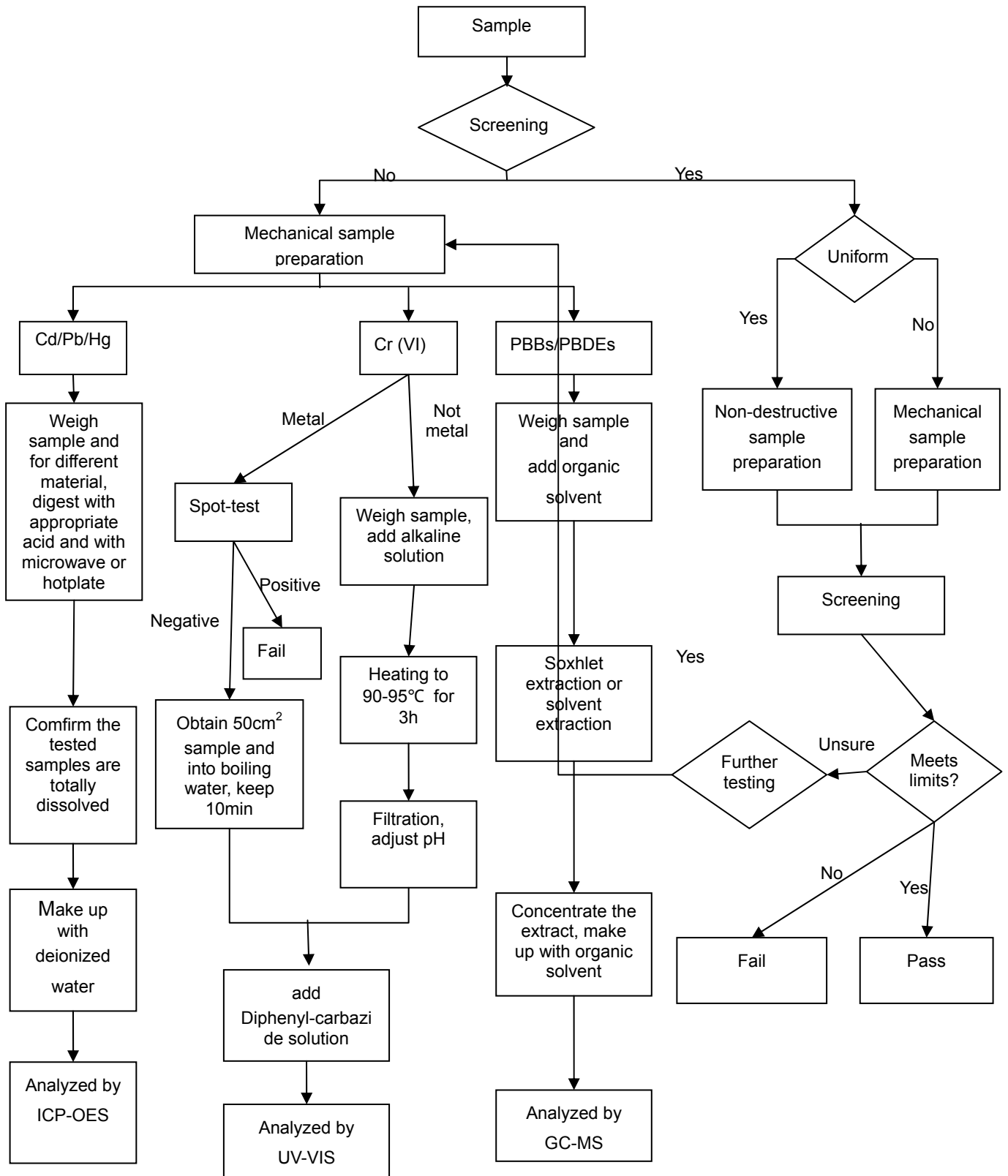
Component No.	Component name	Specimen No.	Specimen name
38	PCB board assembly	38-121	PCB10L1-3 black plastic
		38-122	PCB10L1-3 skeleton
		38-123	PCB10L1-3 copper wire
		38-124	PCB10L1-3 pin
		38-125	PCB board assembly - PCB10U2 Body
		38-126	PCB board assembly - PCB10U2 pin
		38-127	PCB board assembly-PCB10Q1 housing
		38-128	PCB board assembly-PCB10Q1 metal sheet
		38-129	PCB board assembly-PCB10Q1 solder
		38-130	PCB board assembly - PCB10Q1 pin
		38-131	PCB board assembly-PCB10F brown shell
		38-132	PCB board assembly - PCB10F black plastic
		38-133	PCB board assembly - PCB10F fuse
		38-134	PCB board assembly - PCB10F pin
		38-135	PCB board assembly-PCB10 white glue
		38-136	PCB board assembly - PCB10 patch R
		38-137	PCB board assembly - PCB10 patch C
		38-138	PCB board assembly - PCB10 patch D
		38-139	PCB board assembly - PCB10 patch U
		38-140	PCB board assembly - PCB10 patch BD
38-141	PCB board assembly - PCB10 green coating		
38-142	PCB board assembly - PCB10 resin		
38-143	PCB board assembly-PCB10		

Component No.	Component name	Specimen No.	Specimen name
			copper
38	PCB board assembly	38-144	PCB board assembly - PCB10 solder
39	Spring	39-1	Spring - black coating
		39-2	Spring - the substrate
40	Metal block	40	Metal block
41	Screw assembly	41-1	Screw assembly - nail 1 coating
		41-2	Screw assembly - nail 1 substrate
		41-3	Screw assembly - nail 2 coating
		41-4	Screw assembly - nail 2 substrate
		41-5	Screw assembly - nail 3 coating
		41-6	Screw assembly - nail 3 substrate
		41-7	Screw assembly - nail 4 plating
		41-8	Screw assembly - nail 4 substrate
		41-9	Screw assembly - nail 5 coating
		41-10	Screw assembly - nail 5 substrate
		41-11	Screw assembly - nail 6 coating
		41-12	Screw assembly - nail 6 substrate
		41-13	Screw assembly - nail 7 coating
		41-14	Screw assembly - nail 7 substrate
		41-15	Screw assembly - nail 8 coating
		41-16	Screw assembly - nail 8 substrate
		41-17	Screw assembly - nail 9 coating
		41-18	Screw assembly - nail 9 substrate
		41-19	Screw assembly - nail 10 black coating
		41-20	Screw assembly - nail 10 substrate

Component No.	Component name	Specimen No.	Specimen name
41	Screw assembly	41-21	Screw assembly - nail 11 black coating
		41-22	Screw assembly - nail 11 substrate

Flowchart

The determination of Pb, Cd, Hg, Cr(VI), PBBs, PBDEs.



Test Result

No.	Test Sample:	Screening Result						Verification Test Result							Verdict
		Pb	Cd	Hg	Cr	Br	Verdict	Pb	Cd	Hg	(Cr VI)		PBBs	PBDEs	
											1000 (d)	0.02 (e)			
Requirement (mg/kg)		b)	b)	b)	b)	b)		1000	100	1000	1000	1000	1000	1000	1000
MDL (mg/kg)		10	10	10	10	10		5	5	5	5	5	50	50	
1	Black plastic tray	N.D.	N.D.	N.D.	N.D.	N.D.	P	/	/	/	/	/	/	/	P
2-1	Hose - blue rubber	N.D.	N.D.	N.D.	N.D.	N.D.	P	/	/	/	/	/	/	/	P
2-2	Hose - Transparent plastic	N.D.	N.D.	N.D.	N.D.	N.D.	P	/	/	/	/	/	/	/	P
3-1	Power cord - plug cover	N.D.	N.D.	N.D.	N.D.	1.6x10 ⁴	V	/	/	/	/	/	N.D.	N.D.	P
3-2	Power cord - plug under cover	N.D.	N.D.	N.D.	N.D.	9884	V	/	/	/	/	/	N.D.	N.D.	P
3-3	Power Cord - Plug Insert	N.D.	N.D.	N.D.	N.D.	—	P	/	/	/	/	/	/	/	P
3-4	Power cord - white plastic sheet	N.D.	N.D.	N.D.	N.D.	N.D.	P	/	/	/	/	/	/	/	P
3-5	Power cord - yellow tape	N.D.	N.D.	N.D.	N.D.	N.D.	P	/	/	/	/	/	/	/	P
3-6	Power cord - black skin 1	N.D.	N.D.	N.D.	N.D.	N.D.	P	/	/	/	/	/	/	/	P
3-7	Power cord - copper wire	N.D.	N.D.	N.D.	N.D.	—	P	/	/	/	/	/	/	/	P
3-8	Power cord - black skin 2	N.D.	N.D.	N.D.	N.D.	N.D.	P	/	/	/	/	/	/	/	P
3-9	Power cord - copper wire 2	N.D.	N.D.	N.D.	N.D.	—	P	/	/	/	/	/	/	/	P
3-10	Power cord - black plastic	N.D.	N.D.	N.D.	N.D.	N.D.	P	/	/	/	/	/	/	/	P
3-11	Power Cord - Pigtail Plastic	N.D.	N.D.	N.D.	N.D.	N.D.	P	/	/	/	/	/	/	/	P
3-12	Power Cord - Plug Metal	N.D.	N.D.	N.D.	N.D.	—	P	/	/	/	/	/	/	/	P
3-13	Power cord - tail plug	N.D.	N.D.	N.D.	N.D.	—	P	/	/	/	/	/	/	/	P
3-14	Power Cord - Black plastic inside the plug	N.D.	N.D.	N.D.	N.D.	N.D.	P	/	/	/	/	/	/	/	P

No.	Test Sample:	Screening Result						Verification Test Result							Verdict
		Pb	Cd	Hg	Cr	Br	Verdict	Pb	Cd	Hg	(Cr VI)		PBBs	PBDEs	
											1000 (d)	0.02 (e)			
Requirement (mg/kg)		b)	b)	b)	b)	b)		1000	100	1000	1000	1000	1000	1000	
MDL (mg/kg)		10	10	10	10	10		5	5	5	5	5	50	50	
4	label	N.D.	N.D.	N.D.	N.D.	N.D.	P	/	/	/	/	/	/	/	P
5	Foot pad	N.D.	N.D.	N.D.	N.D.	N.D.	P	/	/	/	/	/	/	/	P
6	Bottom shell	N.D.	N.D.	N.D.	N.D.	1421	V	/	/	/	/	/	N.D.	N.D.	P
7-1	Panel - Coating	N.D.	N.D.	N.D.	N.D.	N.D.	P	/	/	/	/	/	/	/	P
7-2	Panel - brown transparent plastic	N.D.	N.D.	N.D.	N.D.	N.D.	P	/	/	/	/	/	/	/	P
8	Rubber button	N.D.	N.D.	N.D.	N.D.	N.D.	P	/	/	/	/	/	/	/	P
9	Base	N.D.	N.D.	N.D.	N.D.	181	P	/	/	/	/	/	/	/	P
10	Transparent plastic cover	N.D.	N.D.	N.D.	N.D.	N.D.	P	/	/	/	/	/	/	/	P
11	Black plastic	N.D.	N.D.	N.D.	N.D.	250	P	/	/	/	/	/	N.D.	N.D.	P
12	Support rod	N.D.	N.D.	N.D.	N.D.	102	P	/	/	/	/	/	/	/	P
13	Black plastic	N.D.	N.D.	N.D.	N.D.	N.D.	P	/	/	/	/	/	/	/	P
14	Black plastic	N.D.	N.D.	N.D.	N.D.	N.D.	P	/	/	/	/	/	/	/	P
15	Black plastic	N.D.	N.D.	N.D.	N.D.	N.D.	P	/	/	/	/	/	/	/	P
16	Black plastic	N.D.	N.D.	N.D.	N.D.	N.D.	P	/	/	/	/	/	/	/	P
17	Black plastic	N.D.	N.D.	N.D.	N.D.	144	P	/	/	/	/	/	/	/	P
18	Black plastic	N.D.	N.D.	N.D.	N.D.	N.D.	P	/	/	/	/	/	/	/	P
19	Black plastic	N.D.	N.D.	N.D.	N.D.	178	P	/	/	/	/	/	/	/	P
20	Cover	N.D.	N.D.	N.D.	N.D.	275	V	/	/	/	/	/	N.D.	N.D.	P
21	Black plastic	N.D.	N.D.	N.D.	N.D.	N.D.	P	/	/	/	/	/	/	/	P
22	Black plastic	N.D.	N.D.	N.D.	N.D.	105	P	/	/	/	/	/	/	/	P

No.	Test Sample:	Screening Result						Verification Test Result							Verdict
		Pb	Cd	Hg	Cr	Br	Verdict	Pb	Cd	Hg	(Cr VI)		PBBs	PBDEs	
											1000 (d)	0.02 (e)			
Requirement (mg/kg)		b)	b)	b)	b)	b)		1000	100	1000	1000	1000	1000	1000	
MDL (mg/kg)		10	10	10	10	10		5	5	5	5	5	50	50	
23	Black plastic	N.D.	N.D.	N.D.	N.D.	110	P	/	/	/	/	/	/	/	P
24-1	Black plastic block - black tape	N.D.	N.D.	N.D.	N.D.	N.D.	P	/	/	/	/	/	/	/	P
24-2	Black plastic block - Black coating	N.D.	N.D.	N.D.	N.D.	N.D.	P	/	/	/	/	/	/	/	P
24-3	Black plastic block - transparent film	N.D.	N.D.	N.D.	N.D.	N.D.	P	/	/	/	/	/	/	/	P
24-4	Black plastic block - black plastic	N.D.	N.D.	N.D.	N.D.	N.D.	P	/	/	/	/	/	/	/	P
25	Pressure plate	N.D.	N.D.	N.D.	N.D.	2187	V	/	/	/	/	/	N.D.	N.D.	P
26	Milky white apron	N.D.	N.D.	N.D.	N.D.	N.D.	P	/	/	/	/	/	/	/	P
27	Milky white apron	N.D.	N.D.	N.D.	N.D.	N.D.	P	/	/	/	/	/	/	/	P
28	Black rubber ring	N.D.	N.D.	N.D.	N.D.	N.D.	P	/	/	/	/	/	/	/	P
29	transparent plastic	N.D.	N.D.	N.D.	N.D.	N.D.	P	/	/	/	/	/	/	/	P
30	transparent plastic	N.D.	N.D.	N.D.	N.D.	N.D.	P	/	/	/	/	/	/	/	P
31-1	Fan-label	N.D.	N.D.	N.D.	N.D.	N.D.	P	/	/	/	/	/	/	/	P
31-2	Fan - bracket	N.D.	N.D.	N.D.	N.D.	5.1 x10 ⁴	V	/	/	/	/	/	N.D.	N.D.	P
31-3	Fan - fan blades	N.D.	N.D.	N.D.	N.D.	4.8 x10 ⁴	V	/	/	/	/	/	N.D.	N.D.	P
31-4	Fan - magnetic plastic	N.D.	N.D.	N.D.	N.D.	N.D.	P	/	/	/	/	/	/	/	P
31-5	Fan - metal ring coating	N.D.	N.D.	N.D.	N.D.	—	P	/	/	/	/	/	/	/	P
31-6	Fan - metal ring substrate	N.D.	N.D.	N.D.	N.D.	—	P	/	/	/	/	/	/	/	P
31-7	Fan - White washer	N.D.	N.D.	N.D.	N.D.	N.D.	P	/	/	/	/	/	/	/	P
31-8	Fan - orange apron	N.D.	N.D.	N.D.	N.D.	N.D.	P	/	/	/	/	/	/	/	P

No.	Test Sample:	Screening Result						Verification Test Result							Verdict
		Pb	Cd	Hg	Cr	Br	Verdict	Pb	Cd	Hg	(Cr VI)		PBBs	PBDEs	
											1000 (d)	0.02 (e)			
Requirement (mg/kg)		b)	b)	b)	b)	b)		1000	100	1000	1000	1000	1000	1000	
MDL (mg/kg)		10	10	10	10	10		5	5	5	5	5	50	50	
31-9	Fan - Silver metal	N.D.	N.D.	N.D.	N.D.	—	P	/	/	/	/	/	/	/	P
31-10	Fan - yellow metal	N.D.	N.D.	N.D.	N.D.	—	P	/	/	/	/	/	/	/	P
31-11	Fan - copper wire	N.D.	N.D.	N.D.	N.D.	—	P	/	/	/	/	/	/	/	P
31-12	Fan - metal ring	N.D.	N.D.	N.D.	N.D.	—	P	/	/	/	/	/	/	/	P
32-1	Motor 1 - tag	N.D.	N.D.	N.D.	N.D.	N.D.	P	/	/	/	/	/	/	/	P
32-2	Motor 1 - shell gray coating	N.D.	N.D.	N.D.	N.D.	N.D.	P	/	/	/	/	/	/	/	P
32-3	Motor 1 - Housing Substrate	N.D.	N.D.	N.D.	N.D.	—	P	/	/	/	/	/	/	/	P
32-4	Motor 1 - metal pin 1	N.D.	N.D.	N.D.	N.D.	—	P	/	/	/	/	/	/	/	P
32-5	Motor 1 - metal pin 2	N.D.	N.D.	N.D.	N.D.	—	P	/	/	/	/	/	/	/	P
32-6	Motor 1 - Sheet metal	N.D.	N.D.	N.D.	N.D.	—	P	/	/	/	/	/	/	/	P
32-7	Motor 1 - Magnet	N.D.	N.D.	N.D.	N.D.	—	P	/	/	/	/	/	/	/	P
32-8	Motor 1 - plastic gears	N.D.	N.D.	N.D.	N.D.	N.D.	P	/	/	/	/	/	/	/	P
32-9	Motor 1 - white plastic ring	N.D.	N.D.	N.D.	N.D.	N.D.	P	/	/	/	/	/	/	/	P
32-10	Motor 1 - white plastic	N.D.	N.D.	N.D.	N.D.	1.1 x10 ⁵	V	/	/	/	/	/	N.D.	N.D.	P
32-11	Motor 1 - meter yellow plastic	N.D.	N.D.	N.D.	N.D.	N.D.	P	/	/	/	/	/	/	/	P
32-12	Motor 1 - copper wire	N.D.	N.D.	N.D.	N.D.	—	P	/	/	/	/	/	/	/	P
33-1	Motor 2 - plastic buckle	N.D.	N.D.	N.D.	N.D.	N.D.	P	/	/	/	/	/	/	/	P
33-2	Motor 2 - White housing	N.D.	N.D.	N.D.	N.D.	N.D.	P	/	/	/	/	/	/	/	P
33-3	Motor 2 - Lubricating oil	N.D.	N.D.	N.D.	N.D.	N.D.	P	/	/	/	/	/	/	/	P

No.	Test Sample:	Screening Result						Verification Test Result							Verdict
		Pb	Cd	Hg	Cr	Br	Verdict	Pb	Cd	Hg	(Cr VI)		PBBs	PBDEs	
											1000 (d)	0.02 (e)			
Requirement (mg/kg)		b)	b)	b)	b)	b)		1000	100	1000	1000	1000	1000	1000	
MDL (mg/kg)		10	10	10	10	10		5	5	5	5	5	50	50	
33-4	Motor 2 - light green gear	N.D.	N.D.	N.D.	N.D.	N.D.	P	/	/	/	/	/	/	/	P
33-5	Motor 2 - white gear	N.D.	N.D.	N.D.	N.D.	N.D.	P	/	/	/	/	/	/	/	P
33-6	Motor 2 - meter yellow gear	N.D.	N.D.	N.D.	N.D.	N.D.	P	/	/	/	/	/	/	/	P
33-7	Motor 2 - khaki gear	N.D.	N.D.	N.D.	N.D.	N.D.	P	/	/	/	/	/	/	/	P
33-8	Motor 2 - meter yellow plastic	N.D.	N.D.	N.D.	N.D.	N.D.	P	/	/	/	/	/	/	/	P
33-9	Motor 2 - white washer	N.D.	N.D.	N.D.	N.D.	N.D.	P	/	/	/	/	/	/	/	P
33-10	Motor 2 - orange apron	N.D.	N.D.	N.D.	N.D.	N.D.	P	/	/	/	/	/	/	/	P
33-11	Motor 2 - Black ring	N.D.	N.D.	N.D.	N.D.	N.D.	P	/	/	/	/	/	/	/	P
33-12	Motor 2 - solder	N.D.	N.D.	N.D.	N.D.	—	P	/	/	/	/	/	/	/	P
33-13	Motor 2 - copper ring 1	N.D.	N.D.	N.D.	N.D.	—	P	/	/	/	/	/	/	/	P
33-14	Motor 2 - copper ring 2	N.D.	N.D.	N.D.	N.D.	—	P	/	/	/	/	/	/	/	P
33-15	Motor 2 - yellow metal	N.D.	N.D.	N.D.	N.D.	—	P	/	/	/	/	/	/	/	P
33-16	Motor 2 - capacitor body	N.D.	N.D.	N.D.	N.D.	N.D.	P	/	/	/	/	/	/	/	P
33-17	Motor 2 - capacitance pin	N.D.	N.D.	N.D.	N.D.	—	P	/	/	/	/	/	/	/	P
33-18	Motor 2 - metal pin 1	N.D.	N.D.	N.D.	N.D.	—	P	/	/	/	/	/	/	/	P
33-19	Motor 2 - Metal pin 2	N.D.	N.D.	N.D.	N.D.	—	P	/	/	/	/	/	/	/	P
33-20	Motor 2 - Metal strip	N.D.	N.D.	N.D.	N.D.	—	P	/	/	/	/	/	/	/	P
33-21	Motor 2 - magnet	N.D.	N.D.	N.D.	N.D.	—	P	/	/	/	/	/	/	/	P
33-22	Motor 2 - metal shell	N.D.	N.D.	N.D.	N.D.	—	P	/	/	/	/	/	/	/	P

No.	Test Sample:	Screening Result						Verification Test Result							Verdict
		Pb	Cd	Hg	Cr	Br	Verdict	Pb	Cd	Hg	(Cr VI)		PBBs	PBDEs	
											1000 (d)	0.02 (e)			
Requirement (mg/kg)		b)	b)	b)	b)	b)		1000	100	1000	1000	1000	1000	1000	
MDL (mg/kg)		10	10	10	10	10		5	5	5	5	5	50	50	
33-23	Motor 2 - enameled wire color paint	N.D.	N.D.	N.D.	N.D.	N.D.	P	/	/	/	/	/	/	/	P
33-24	Motor 2 - enameled copper wire	N.D.	N.D.	N.D.	N.D.	—	P	/	/	/	/	/	/	/	P
33-25	Motor 2 - metal sheet	N.D.	N.D.	N.D.	N.D.	—	P	/	/	/	/	/	/	/	P
34-1	Shaft - brown apron	N.D.	N.D.	N.D.	N.D.	N.D.	P	/	/	/	/	/	/	/	P
34-2	Shaft - metal ring	N.D.	N.D.	N.D.	N.D.	—	P	/	/	/	/	/	/	/	P
34-3	Shaft - metal ring 2	N.D.	N.D.	N.D.	N.D.	—	P	/	/	/	/	/	/	/	P
34-4	Shaft - ball	N.D.	N.D.	N.D.	N.D.	—	P	/	/	/	/	/	/	/	P
34-5	Shaft - lubricating oil	N.D.	N.D.	N.D.	N.D.	N.D.	P	/	/	/	/	/	/	/	P
35-1	Component 1 - black plastic 1	N.D.	N.D.	N.D.	N.D.	178	P	/	/	/	/	/	/	/	P
35-2	Component 1 - black plastic 2	N.D.	N.D.	N.D.	N.D.	2075	V	/	/	/	/	/	N.D.	N.D.	P
35-3	Component 1 - black plastic 3	N.D.	N.D.	N.D.	N.D.	N.D.	P	/	/	/	/	/	/	/	P
35-4	Component 1 - White fibers	N.D.	N.D.	N.D.	N.D.	N.D.	P	/	/	/	/	/	/	/	P
35-5	Component 1 - spring	N.D.	N.D.	N.D.	N.D.	—	P	/	/	/	/	/	/	/	P
35-6	Component 1 - apron	N.D.	N.D.	N.D.	N.D.	N.D.	P	/	/	/	/	/	/	/	P
35-7	Component 1 - solder	2.7 x10 ⁵	N.D.	N.D.	N.D.	—	P ▲ 1	/	/	/	/	/	/	/	P ▲ 1
35-8	Component 1 - Sheet metal	N.D.	N.D.	N.D.	N.D.	—	P	/	/	/	/	/	/	/	P
36-1	Component 2 - Metal pin	N.D.	N.D.	N.D.	N.D.	—	P	/	/	/	/	/	/	/	P
36-2	Component 2 - Silver metal	N.D.	N.D.	N.D.	N.D.	—	P	/	/	/	/	/	/	/	P
36-3	Component 2 - yellow metal	4.6 x10 ⁴	N.D.	N.D.	N.D.	—	P ▲ 2	/	/	/	/	/	/	/	P ▲ 2

No.	Test Sample:	Screening Result						Verification Test Result							Verdict
		Pb	Cd	Hg	Cr	Br	Verdict	Pb	Cd	Hg	(Cr VI)		PBBs	PBDEs	
											1000 (d)	0.02 (e)			
Requirement (mg/kg)		b)	b)	b)	b)	b)		1000	100	1000	1000	1000	1000	1000	
MDL (mg/kg)		10	10	10	10	10		5	5	5	5	5	50	50	
36-4	Component 2 - metal rod	N.D.	N.D.	N.D.	N.D.	—	P	/	/	/	/	/	/	/	P
36-5	Component 2 - Black plastic	N.D.	N.D.	N.D.	N.D.	N.D.	P	/	/	/	/	/	/	/	P
37-1	Wire assembly - Wire 1 red shell	N.D.	N.D.	N.D.	N.D.	N.D.	P	/	/	/	/	/	/	/	P
37-2	Wire assembly - Wire 1 black skin	N.D.	N.D.	N.D.	N.D.	N.D.	P	/	/	/	/	/	/	/	P
37-3	Wire assembly - Wire 1 Copper Wire	N.D.	N.D.	N.D.	N.D.	—	P	/	/	/	/	/	/	/	P
37-4	Wire assembly- Wire 2 black sheath	N.D.	N.D.	N.D.	N.D.	N.D.	P	/	/	/	/	/	/	/	P
37-5	Wire assembly- Wire 2 blue skin	N.D.	N.D.	N.D.	N.D.	N.D.	P	/	/	/	/	/	/	/	P
37-6	Wire assembly- Wire 2 flesh-colored skins	N.D.	N.D.	N.D.	N.D.	N.D.	P	/	/	/	/	/	/	/	P
37-7	Wire assembly- Wire 2 Yellow skin	N.D.	N.D.	N.D.	N.D.	N.D.	P	/	/	/	/	/	/	/	P
37-8	Wire assembly- Wire 2 red shell	N.D.	N.D.	N.D.	N.D.	N.D.	P	/	/	/	/	/	/	/	P
37-9	Wire assembly- Wire 2 to copper wire	N.D.	N.D.	N.D.	N.D.	—	P	/	/	/	/	/	/	/	P
37-10	Wire assembly- Wire 2 Connector Plastic	N.D.	N.D.	N.D.	N.D.	N.D.	P	/	/	/	/	/	/	/	P
37-11	Wire assembly- Wire 2 Connector Pin	N.D.	N.D.	N.D.	N.D.	—	P	/	/	/	/	/	/	/	P
37-12	Wire assembly- Wire 3 black skin	N.D.	N.D.	N.D.	N.D.	N.D.	P	/	/	/	/	/	/	/	P
37-13	Wire assembly- Wire 3 red shell	N.D.	N.D.	N.D.	N.D.	N.D.	P	/	/	/	/	/	/	/	P
37-14	Wire assembly- Wire 3 to copper wire	N.D.	N.D.	N.D.	N.D.	—	P	/	/	/	/	/	/	/	P
37-15	Wire assembly- Wire 3 Connector Plastic	N.D.	N.D.	N.D.	N.D.	N.D.	P	/	/	/	/	/	/	/	P
37-16	Wire assembly- Wire 3 Connector Pin	N.D.	N.D.	N.D.	N.D.	—	P	/	/	/	/	/	/	/	P

No.	Test Sample:	Screening Result						Verification Test Result							Verdict
		Pb	Cd	Hg	Cr	Br	Verdict	Pb	Cd	Hg	(Cr VI)		PBBs	PBDEs	
											1000 (d)	0.02 (e)			
Requirement (mg/kg)		b)	b)	b)	b)	b)		1000	100	1000	1000	1000	1000	1000	
MDL (mg/kg)		10	10	10	10	10		5	5	5	5	5	50	50	
37-17	Wire assembly- Wire 4 black skin	N.D.	N.D.	N.D.	N.D.	N.D.	P	/	/	/	/	/	/	/	P
37-18	Wire assembly- Wire 4 red shell	N.D.	N.D.	N.D.	N.D.	N.D.	P	/	/	/	/	/	/	/	P
37-19	Wire assembly- wire 4 to copper wire	N.D.	N.D.	N.D.	N.D.	—	P	/	/	/	/	/	/	/	P
37-20	Wire assembly- Wire 4 Connector Plastic	N.D.	N.D.	N.D.	N.D.	N.D.	P	/	/	/	/	/	/	/	P
37-21	Wire assembly- Wire 4 Connector Pin	N.D.	N.D.	N.D.	N.D.	—	P	/	/	/	/	/	/	/	P
37-22	Wire assembly- Wire 5 Purple Skin	N.D.	N.D.	N.D.	N.D.	N.D.	P	/	/	/	/	/	/	/	P
37-23	Wire assembly- Wire 5 gray skin	N.D.	N.D.	N.D.	N.D.	N.D.	P	/	/	/	/	/	/	/	P
37-24	Wire assembly- wire 4 to copper wire	N.D.	N.D.	N.D.	N.D.	—	P	/	/	/	/	/	/	/	P
37-25	Wire assembly- Wire 5 Connector Plastic	N.D.	N.D.	N.D.	N.D.	4353	V	/	/	/	/	/	N.D.	N.D.	P
37-26	Wire assembly- Wire 5 Connector Pin	N.D.	N.D.	N.D.	N.D.	—	P	/	/	/	/	/	/	/	P
37-27	Wire assembly- Wire 6 with cable ties	N.D.	N.D.	N.D.	N.D.	N.D.	P	/	/	/	/	/	/	/	P
37-28	Wire assembly- Wire 6 Black Outer (Large)	N.D.	N.D.	N.D.	N.D.	N.D.	P	/	/	/	/	/	/	/	P
37-29	Wire assembly- Wire 6 Black Outer (Small)	N.D.	N.D.	N.D.	N.D.	N.D.	P	/	/	/	/	/	/	/	P
37-30	Wire assembly- LINE 6 red shell	N.D.	N.D.	N.D.	N.D.	N.D.	P	/	/	/	/	/	/	/	P
37-31	Wire assembly- Wire 6 white shell	N.D.	N.D.	N.D.	N.D.	N.D.	P	/	/	/	/	/	/	/	P
37-32	Wire assembly- Wire 6 green shell	N.D.	N.D.	N.D.	N.D.	N.D.	P	/	/	/	/	/	/	/	P
37-33	Wire assembly- Wire 6 Copper Wire	N.D.	N.D.	N.D.	N.D.	—	P	/	/	/	/	/	/	/	P

No.	Test Sample:	Screening Result						Verification Test Result							Verdict
		Pb	Cd	Hg	Cr	Br	Verdict	Pb	Cd	Hg	(Cr VI)		PBBs	PBDEs	
											1000 (d)	0.02 (e)			
Requirement (mg/kg)		b)	b)	b)	b)	b)		1000	100	1000	1000	1000	1000	1000	
MDL (mg/kg)		10	10	10	10	10		5	5	5	5	5	50	50	
37-34	Wire assembly- Wire 6 White Glue	N.D.	N.D.	N.D.	N.D.	N.D.	P	/	/	/	/	/	/	/	P
37-35	Wire assembly- Wire 6 Connector Plastic	N.D.	N.D.	N.D.	N.D.	N.D.	P	/	/	/	/	/	/	/	P
37-36	Wire assembly- Wire 6 Connector Pin	N.D.	N.D.	N.D.	N.D.	—	P	/	/	/	/	/	/	/	P
38-1	PCB board assembly - PCB1 green coating	N.D.	N.D.	N.D.	N.D.	N.D.	P	/	/	/	/	/	/	/	P
38-2	PCB board assembly - PCB1 resin	N.D.	N.D.	N.D.	N.D.	5.9 x10 ⁴	V	/	/	/	/	/	N.D.	N.D.	P
38-3	PCB board assembly-PCB1 copper	N.D.	N.D.	N.D.	N.D.	—	P	/	/	/	/	/	/	/	P
38-4	PCB board assembly - PCB1 Pin	N.D.	N.D.	N.D.	N.D.	—	P	/	/	/	/	/	/	/	P
38-5	PCB board assembly - PCB2U body	N.D.	N.D.	N.D.	N.D.	N.D.	P	/	/	/	/	/	/	/	P
38-6	PCB board assembly - PCB2U pin	N.D.	N.D.	N.D.	N.D.	N.D.	P	/	/	/	/	/	/	/	P
38-7	PCB board assembly - PCB2 green coating	N.D.	N.D.	N.D.	N.D.	N.D.	P	/	/	/	/	/	/	/	P
38-8	PCB board assembly - PCB2 resin	N.D.	N.D.	N.D.	N.D.	1412	V	/	/	/	/	/	N.D.	N.D.	P
38-9	PCB board assembly-PCB2 copper	N.D.	N.D.	N.D.	N.D.	—	P	/	/	/	/	/	/	/	P
38-10	PCB board assembly-PCB2 solder	N.D.	N.D.	N.D.	N.D.	—	P	/	/	/	/	/	/	/	P
38-11	PCB board assembly-PCB3H1 black plastic	N.D.	N.D.	N.D.	N.D.	6383	V	/	/	/	/	/	N.D.	N.D.	P

No.	Test Sample:	Screening Result						Verification Test Result							Verdict
		Pb	Cd	Hg	Cr	Br	Verdict	Pb	Cd	Hg	(Cr VI)		PBBs	PBDEs	
											1000 (d)	0.02 (e)			
Requirement (mg/kg)		b)	b)	b)	b)	b)		1000	100	1000	1000	1000	1000	1000	1000
MDL (mg/kg)		10	10	10	10	10		5	5	5	5	5	50	50	
38-12	PCB board assembly-PCB3H1 pin	N.D.	N.D.	N.D.	N.D.	—	P	/	/	/	/	/	/	/	P
38-13	PCB board assembly-PCB3 green coating	N.D.	N.D.	N.D.	N.D.	N.D.	P	/	/	/	/	/	/	/	P
38-14	PCB board assembly - PCB3 resin	N.D.	N.D.	N.D.	N.D.	7.0 x10 ⁴	V	/	/	/	/	/	N.D.	N.D.	P
38-15	PCB board assembly-PCB3 copper	N.D.	N.D.	N.D.	N.D.	—	P	/	/	/	/	/	/	/	P
38-16	PCB board assembly - PCB3 solder	N.D.	N.D.	N.D.	N.D.	—	P	/	/	/	/	/	/	/	P
38-17	PCB board assembly-PCB4H1 black plastic	N.D.	N.D.	N.D.	N.D.	2535	V	/	/	/	/	/	N.D.	N.D.	P
38-18	PCB board assembly - PCB4H1 pin	N.D.	N.D.	N.D.	N.D.	—	P	/	/	/	/	/	/	/	P
38-19	PCB board assembly-PCB4J1 black plastic	N.D.	N.D.	N.D.	N.D.	4.0 x10 ⁴	V	/	/	/	/	/	N.D.	N.D.	P
38-20	PCB board assembly-PCB4J1 pin	N.D.	N.D.	N.D.	N.D.	—	P	/	/	/	/	/	/	/	P
38-21	PCB board assembly-PCB4LED 1 black apron	N.D.	N.D.	N.D.	N.D.	N.D.	P	/	/	/	/	/	/	/	P
38-22	PCB board assembly-PCB4LED 1 black plastic	N.D.	N.D.	N.D.	N.D.	N.D.	P	/	/	/	/	/	/	/	P
38-23	PCB board assembly - PCB4LED1 Body	N.D.	N.D.	N.D.	N.D.	2440	V	/	/	/	/	/	N.D.	N.D.	P
38-24	PCB board assembly - PCB4LED1 Pin	N.D.	N.D.	N.D.	N.D.	—	P	/	/	/	/	/	/	/	P
38-25	PCB board - PCB4 green coating	N.D.	N.D.	N.D.	N.D.	N.D.	P	/	/	/	/	/	/	/	P

No.	Test Sample:	Screening Result						Verdict	Verification Test Result						Verdict
		Pb	Cd	Hg	Cr	Br	Pb		Cd	Hg	(Cr VI)		PBBs	PBDEs	
											1000 (d)	0.02 (e)			
Requirement (mg/kg)		b)	b)	b)	b)	b)	1000	100	1000	1000	1000	1000	1000	1000	
MDL (mg/kg)		10	10	10	10	10	5	5	5	5	5	50	50		
38-26	PCB board assembly - PCB4 resin	N.D.	N.D.	N.D.	N.D.	5.8 x10 ⁴	V	/	/	/	/	/	N.D.	N.D.	P
38-27	PCB board assembly-PCB4 copper	N.D.	N.D.	N.D.	N.D.	—	P	/	/	/	/	/	/	/	P
38-28	PCB board assembly-PCB4 solder	N.D.	N.D.	N.D.	N.D.	—	P	/	/	/	/	/	/	/	P
38-29	PCB board assembly-PCB5J2 white plastic	N.D.	N.D.	N.D.	N.D.	N.D.	P	/	/	/	/	/	/	/	P
38-30	PCB board assembly - PCB5J2 pin	N.D.	N.D.	N.D.	N.D.	—	P	/	/	/	/	/	/	/	P
38-31	PCB board assembly - PCB5 connector black plastic	N.D.	N.D.	N.D.	N.D.	722	V	/	/	/	/	/	N.D.	N.D.	P
38-32	PCB board assembly - PCB5 connector pins	N.D.	N.D.	N.D.	N.D.	—	P	/	/	/	/	/	/	/	P
38-33	PCB board assembly - PCB5 connector pins	N.D.	N.D.	N.D.	N.D.	—	P	/	/	/	/	/	/	/	P
38-34	PCB board assembly - PCB5 green coating	N.D.	N.D.	N.D.	N.D.	N.D.	P	/	/	/	/	/	/	/	P
38-35	PCB board assembly - PCB5 resin	N.D.	N.D.	N.D.	N.D.	5.4 x10 ⁴	V	/	/	/	/	/	N.D.	N.D.	P
38-36	PCB board assembly-PCB5 copper	N.D.	N.D.	N.D.	N.D.	—	P	/	/	/	/	/	/	/	P
38-37	PCB board assembly - PCB5 solder	N.D.	N.D.	N.D.	N.D.	—	P	/	/	/	/	/	/	/	P
38-38	PCB board assembly-PCB6H1 black plastic	N.D.	N.D.	N.D.	N.D.	N.D.	P	/	/	/	/	/	/	/	P

No.	Test Sample:	Screening Result						Verification Test Result							Verdict
		Pb	Cd	Hg	Cr	Br	Verdict	Pb	Cd	Hg	(Cr VI)		PBBs	PBDEs	
											1000 (d)	0.02 (e)			
Requirement (mg/kg)		b)	b)	b)	b)	b)		1000	100	1000	1000	1000	1000	1000	
MDL (mg/kg)		10	10	10	10	10		5	5	5	5	5	50	50	
38-39	PCB board assembly-PCB6H1 pin	N.D.	N.D.	N.D.	N.D.	—	P	/	/	/	/	/	/	/	P
38-40	PCB6H2-4 white plastic	N.D.	N.D.	N.D.	N.D.	N.D.	P	/	/	/	/	/	/	/	P
38-41	PCB6H2-4 pin	N.D.	N.D.	N.D.	N.D.	—	P	/	/	/	/	/	/	/	P
38-42	PCB board assembly-PCB6S1 blue plastic	N.D.	N.D.	N.D.	N.D.	N.D.	P	/	/	/	/	/	/	/	P
38-43	PCB board assembly-PCB6S1 black plastic	N.D.	N.D.	N.D.	N.D.	N.D.	P	/	/	/	/	/	/	/	P
38-44	PCB board assembly-PCB6S1 metal sheet	N.D.	N.D.	N.D.	N.D.	—	P	/	/	/	/	/	/	/	P
38-45	PCB board assembly-PCB6S1 spring	N.D.	N.D.	N.D.	N.D.	—	P	/	/	/	/	/	/	/	P
38-46	PCB board assembly - PCB6S1 Pin	N.D.	N.D.	N.D.	N.D.	—	P	/	/	/	/	/	/	/	P
38-47	PCB board assembly - PCB6 green coating	N.D.	N.D.	N.D.	N.D.	N.D.	P	/	/	/	/	/	/	/	P
38-48	PCB board assembly-PCB6 resin	N.D.	N.D.	N.D.	N.D.	4.5 x10 ⁴	V	/	/	/	/	/	N.D.	N.D.	P
38-49	PCB board assembly-PCB6 copper	N.D.	N.D.	N.D.	N.D.	—	P	/	/	/	/	/	/	/	P
38-50	PCB board assembly-PCB6 solder	N.D.	N.D.	N.D.	N.D.	—	P	/	/	/	/	/	/	/	P
38-51	PCB board assembly-PCB7J1 white plastic	N.D.	N.D.	N.D.	N.D.	N.D.	P	/	/	/	/	/	/	/	P

No.	Test Sample:	Screening Result						Verification Test Result							Verdict
		Pb	Cd	Hg	Cr	Br	Verdict	Pb	Cd	Hg	(Cr VI)		PBBs	PBDEs	
											1000 (d)	0.02 (e)			
Requirement (mg/kg)		b)	b)	b)	b)	b)		1000	100	1000	1000	1000	1000	1000	
MDL (mg/kg)		10	10	10	10	10		5	5	5	5	5	50	50	
38-52	PCB board assembly-PCB7J1 pin	N.D.	N.D.	N.D.	N.D.	—	P	/	/	/	/	/	/	/	P
38-53	PCB board assembly-PCB7S1 black plastic	N.D.	N.D.	N.D.	N.D.	N.D.	P	/	/	/	/	/	/	/	P
38-54	PCB board assembly-PCB7S1 spring	N.D.	N.D.	N.D.	N.D.	—	P	/	/	/	/	/	/	/	P
38-55	PCB board assembly-PCB7S1 pin	N.D.	N.D.	N.D.	N.D.	—	P	/	/	/	/	/	/	/	P
38-56	PCB board assembly-PCB7 green coating	N.D.	N.D.	N.D.	N.D.	N.D.	P	/	/	/	/	/	/	/	P
38-57	PCB board assembly-PCB7 resin	N.D.	N.D.	N.D.	N.D.	5.5 x10 ⁴	V	/	/	/	/	/	N.D.	N.D.	P
38-58	PCB board assembly-PCB7 copper	N.D.	N.D.	N.D.	N.D.	—	P	/	/	/	/	/	/	/	P
38-59	PCB board assembly - PCB7 solder	N.D.	N.D.	N.D.	N.D.	—	P	/	/	/	/	/	/	/	P
38-60	PCB81-2 white plastic	N.D.	N.D.	N.D.	N.D.	3393	V	/	/	/	/	/	N.D.	N.D.	P
38-61	PCB81-2 pin	N.D.	N.D.	N.D.	N.D.	—	P	/	/	/	/	/	/	/	P
38-62	PCB8LED1-8 body	N.D.	N.D.	N.D.	N.D.	N.D.	P	/	/	/	/	/	/	/	P
38-63	PCB8LED1-8 pin	N.D.	N.D.	N.D.	N.D.	—	P	/	/	/	/	/	/	/	P
38-64	PCB board assembly - PCB8 patch R	N.D.	N.D.	N.D.	N.D.	N.D.	P	/	/	/	/	/	/	/	P
38-65	PCB board assembly-PCB8 green coating	N.D.	N.D.	N.D.	N.D.	N.D.	P	/	/	/	/	/	/	/	P

No.	Test Sample:	Screening Result						Verdict	Verification Test Result						Verdict
		Pb	Cd	Hg	Cr	Br	Pb		Cd	Hg	(Cr VI)		PBBs	PBDEs	
											1000 (d)	0.02 (e)			
Requirement (mg/kg)		b)	b)	b)	b)	b)	1000	100	1000	1000	1000	1000	1000	1000	
MDL (mg/kg)		10	10	10	10	10	5	5	5	5	5	50	50		
38-66	PCB board assembly - PCB8 resin	N.D.	N.D.	N.D.	N.D.	6.0 x10 ⁴	V	/	/	/	/	/	N.D.	N.D.	P
38-67	PCB board assembly-PCB8 copper	N.D.	N.D.	N.D.	N.D.	—	P	/	/	/	/	/	/	/	P
38-68	PCB board assembly-PCB8 solder	N.D.	N.D.	N.D.	N.D.	—	P	/	/	/	/	/	/	/	P
38-69	PCB board assembly-PCB9J1 / 2/4 white plastic	N.D.	N.D.	N.D.	N.D.	N.D.	P	/	/	/	/	/	/	/	P
38-70	PCB board assembly - PCB9J1 / 2/4 pins	N.D.	N.D.	N.D.	N.D.	—	P	/	/	/	/	/	/	/	P
38-71	PCB board assembly-PCB9J3 / 5 black plastic	N.D.	N.D.	N.D.	N.D.	641	V	/	/	/	/	/	N.D.	N.D.	P
38-72	PCB board assembly - PCB9J3 / 5 Pin	N.D.	N.D.	N.D.	N.D.	—	P	/	/	/	/	/	/	/	P
38-73	PCB board assembly-PCB9C3 / 14 black skin	N.D.	N.D.	N.D.	N.D.	N.D.	P	/	/	/	/	/	/	/	P
38-74	PCB board assembly-PCB9C3 / 14 metal housing	N.D.	N.D.	N.D.	N.D.	—	P	/	/	/	/	/	/	/	P
38-75	PCB board assembly - PCB9C3 / 14 electrolyte	N.D.	N.D.	N.D.	N.D.	N.D.	P	/	/	/	/	/	/	/	P
38-76	PCB board assembly-PCB9C3 / 14 cathode	N.D.	N.D.	N.D.	N.D.	—	P	/	/	/	/	/	/	/	P
38-77	PCB board assembly-PCB9C3 / 14 negative	N.D.	N.D.	N.D.	N.D.	—	P	/	/	/	/	/	/	/	P
38-78	PCB board assembly - PCB9C3 / 14 Pin	N.D.	N.D.	N.D.	N.D.	—	P	/	/	/	/	/	/	/	P

No.	Test Sample:	Screening Result						Verification Test Result							Verdict
		Pb	Cd	Hg	Cr	Br	Verdict	Pb	Cd	Hg	(Cr VI)		PBBs	PBDEs	
											1000 (d)	0.02 (e)			
Requirement (mg/kg)		b)	b)	b)	b)	b)		1000	100	1000	1000	1000	1000	1000	
MDL (mg/kg)		10	10	10	10	10		5	5	5	5	5	50	50	
38-79	PCB board assembly-PCB9C3 / 14 black rubber	N.D.	N.D.	N.D.	N.D.	N.D.	P	/	/	/	/	/	/	/	P
38-80	PCB board assembly - PCB9C3 / 14 black plastic	N.D.	N.D.	N.D.	N.D.	N.D.	P	/	/	/	/	/	/	/	P
38-81	PCB9L1-3 black skin	N.D.	N.D.	N.D.	N.D.	N.D.	P	/	/	/	/	/	/	/	P
38-82	PCB9L1-3 skeleton	N.D.	N.D.	N.D.	N.D.	—	P	/	/	/	/	/	/	/	P
38-83	PCB9L1-3 copper wire	N.D.	N.D.	N.D.	N.D.	—	P	/	/	/	/	/	/	/	P
38-84	PCB9L1-3 pin	N.D.	N.D.	N.D.	N.D.	—	P	/	/	/	/	/	/	/	P
38-85	PCB9S1-4 black plastic	N.D.	N.D.	N.D.	N.D.	475	V	/	/	/	/	/	N.D.	N.D.	P
38-86	Green plastic	N.D.	N.D.	N.D.	N.D.	N.D.	P	/	/	/	/	/	/	/	P
38-87	PCB9S1-4 square metal	N.D.	N.D.	N.D.	N.D.	—	P	/	/	/	/	/	/	/	P
38-88	PCB9S1-4 round metal	N.D.	N.D.	N.D.	N.D.	—	P	/	/	/	/	/	/	/	P
38-89	PCB9S1-4 pin	N.D.	N.D.	N.D.	N.D.	—	P	/	/	/	/	/	/	/	P
38-90	PCB board assembly-PCB9SP1 black shell	N.D.	N.D.	N.D.	N.D.	4.7 x10 ⁴	V	/	/	/	/	/	N.D.	N.D.	P
38-91	PCB board assembly-PCB9SP1 metal sheet	N.D.	N.D.	N.D.	N.D.	—	P	/	/	/	/	/	/	/	P
38-92	PCB board assembly-PCB9SP1 silver metal	N.D.	N.D.	N.D.	N.D.	—	P	/	/	/	/	/	/	/	P
38-93	PCB board assembly-PCB9SP1 magnet	N.D.	N.D.	N.D.	N.D.	—	P	/	/	/	/	/	/	/	P

No.	Test Sample:	Screening Result						Verification Test Result							Verdict
		Pb	Cd	Hg	Cr	Br	Verdict	Pb	Cd	Hg	(Cr VI)		PBBs	PBDEs	
											1000 (d)	0.02 (e)			
Requirement (mg/kg)		b)	b)	b)	b)	b)		1000	100	1000	1000	1000	1000	1000	
MDL (mg/kg)		10	10	10	10	10		5	5	5	5	5	50	50	
38-94	PCB board assembly-PCB9SP1 copper wire	N.D.	N.D.	N.D.	N.D.	—	P	/	/	/	/	/	/	/	P
38-95	PCB board assembly - PCB9SP1 pin	N.D.	N.D.	N.D.	N.D.	—	P	/	/	/	/	/	/	/	P
38-96	PCB9U1-5 body	N.D.	N.D.	N.D.	N.D.	N.D.	P	/	/	/	/	/	/	/	P
38-97	The PCB9U1-5 pin	N.D.	N.D.	N.D.	N.D.	—	P	/	/	/	/	/	/	/	P
38-98	PCB board assembly - PCB9 patch R	N.D.	N.D.	N.D.	N.D.	N.D.	P	/	/	/	/	/	/	/	P
38-99	PCB board assembly - PCB9 patch C	N.D.	N.D.	N.D.	N.D.	N.D.	P	/	/	/	/	/	/	/	P
38-100	PCB board assembly - PCB9 patch F	N.D.	N.D.	N.D.	N.D.	N.D.	P	/	/	/	/	/	/	/	P
38-101	PCB board assembly - PCB9 patch Q.	N.D.	N.D.	N.D.	N.D.	N.D.	P	/	/	/	/	/	/	/	P
38-102	PCB board assembly - PCB9 patch D	N.D.	N.D.	N.D.	N.D.	N.D.	P	/	/	/	/	/	/	/	P
38-103	PCB board assembly - PCB9 patch TVS	N.D.	N.D.	N.D.	N.D.	N.D.	P	/	/	/	/	/	/	/	P
38-104	PCB board assembly-PCB9 SMD LED	N.D.	N.D.	N.D.	N.D.	N.D.	P	/	/	/	/	/	/	/	P
38-105	PCB board assembly-PCB9 green coating	N.D.	N.D.	N.D.	N.D.	N.D.	P	/	/	/	/	/	/	/	P
38-106	PCB board assembly - PCB9 resin	N.D.	N.D.	N.D.	N.D.	5.2 x10 ⁴	V	/	/	/	/	/	N.D.	N.D.	P
38-107	PCB board assembly-PCB9 copper	N.D.	N.D.	N.D.	N.D.	—	P	/	/	/	/	/	/	/	P
38-108	PCB board assembly-PCB9 solder	N.D.	N.D.	N.D.	N.D.	—	P	/	/	/	/	/	/	/	P

No.	Test Sample:	Screening Result						Verification Test Result							Verdict
		Pb	Cd	Hg	Cr	Br	Verdict	Pb	Cd	Hg	(Cr VI)		PBBs	PBDEs	
											1000 (d)	0.02 (e)			
Requirement (mg/kg)		b)	b)	b)	b)	b)		1000	100	1000	1000	1000	1000	1000	
MDL (mg/kg)		10	10	10	10	10		5	5	5	5	5	50	50	
38-109	PCB board assembly - PCB10C1 / 2/4/8/9 outer skin	N.D.	N.D.	N.D.	N.D.	N.D.	P	/	/	/	/	/	/	/	P
38-110	PCB board assembly - PCB10C1 / 2/4/8/9 metal case	N.D.	N.D.	N.D.	N.D.	—	P	/	/	/	/	/	/	/	P
38-111	PCB board assembly - PCB10C1 / 2/4/8/9 electrolyte	N.D.	N.D.	N.D.	N.D.	N.D.	P	/	/	/	/	/	/	/	P
38-112	PCB board assembly-PCB10C1 / 2/4/8/9 cathode	N.D.	N.D.	N.D.	N.D.	—	P	/	/	/	/	/	/	/	P
38-113	PCB board assembly - PCB10C1 / 2/4/8/9 negative	N.D.	N.D.	N.D.	N.D.	—	P	/	/	/	/	/	/	/	P
38-114	PCB board assembly - PCB10C1 / 2/4/8/9 pins	N.D.	N.D.	N.D.	N.D.	—	P	/	/	/	/	/	/	/	P
38-115	PCB board assembly-PCB10C1 / 2/4/8/9 black rubber	N.D.	N.D.	N.D.	N.D.	N.D.	P	/	/	/	/	/	/	/	P
38-116	PCB board assembly-PCB10CY blue shell	N.D.	N.D.	N.D.	N.D.	N.D.	P	/	/	/	/	/	/	/	P
38-117	PCB board assembly - PCB10CY main body	N.D.	N.D.	N.D.	N.D.	N.D.	P	/	/	/	/	/	/	/	P
38-118	PCB board assembly - PCB10CY pin	N.D.	N.D.	N.D.	N.D.	—	P	/	/	/	/	/	/	/	P
38-119	PCB10L1-3 black skin	N.D.	N.D.	N.D.	N.D.	N.D.	P	/	/	/	/	/	/	/	P
38-120	PCB10L1-3 yellow tape	N.D.	N.D.	N.D.	N.D.	N.D.	P	/	/	/	/	/	/	/	P
38-121	PCB10L1-3 black plastic	N.D.	N.D.	N.D.	N.D.	N.D.	P	/	/	/	/	/	/	/	P
38-122	PCB10L1-3 skeleton	N.D.	N.D.	N.D.	N.D.	—	P	/	/	/	/	/	/	/	P

No.	Test Sample:	Screening Result						Verification Test Result							Verdict
		Pb	Cd	Hg	Cr	Br	Verdict	Pb	Cd	Hg	(Cr VI)		PBBs	PBDEs	
											1000 (d)	0.02 (e)			
Requirement (mg/kg)		b)	b)	b)	b)	b)		1000	100	1000	1000	1000	1000	1000	
MDL (mg/kg)		10	10	10	10	10		5	5	5	5	5	50	50	
38-123	PCB10L1-3 copper wire	N.D.	N.D.	N.D.	N.D.	—	P	/	/	/	/	/	/	/	P
38-124	PCB10L1-3 pin	N.D.	N.D.	N.D.	N.D.	—	P	/	/	/	/	/	/	/	P
38-125	PCB board assembly - PCB10U2 Body	N.D.	N.D.	N.D.	N.D.	N.D.	P	/	/	/	/	/	/	/	P
38-126	PCB board assembly - PCB10U2 pin	N.D.	N.D.	N.D.	N.D.	—	P	/	/	/	/	/	/	/	P
38-127	PCB board assembly-PCB10Q1 housing	N.D.	N.D.	N.D.	N.D.	N.D.	P	/	/	/	/	/	/	/	P
38-128	PCB board assembly-PCB10Q1 metal sheet	N.D.	N.D.	N.D.	N.D.	—	P	/	/	/	/	/	/	/	P
38-129	PCB board assembly-PCB10Q1 solder	2.4 x10 ⁵	N.D.	N.D.	N.D.	—	P ▲ 1	/	/	/	/	/	/	/	P ▲ 1
38-130	PCB board assembly - PCB10Q1 pin	N.D.	N.D.	N.D.	N.D.	—	P	/	/	/	/	/	/	/	P
38-131	PCB board assembly-PCB10F brown shell	N.D.	N.D.	N.D.	N.D.	N.D.	P	/	/	/	/	/	/	/	P
38-132	PCB board assembly - PCB10F black plastic	N.D.	N.D.	N.D.	N.D.	N.D.	P	/	/	/	/	/	/	/	P
38-133	PCB board assembly - PCB10F fuse	N.D.	N.D.	N.D.	N.D.	—	P	/	/	/	/	/	/	/	P
38-134	PCB board assembly - PCB10F pin	N.D.	N.D.	N.D.	N.D.	—	P	/	/	/	/	/	/	/	P
38-135	PCB board assembly-PCB10 white glue	N.D.	N.D.	N.D.	N.D.	N.D.	P	/	/	/	/	/	/	/	P
38-136	PCB board assembly - PCB10 patch R	N.D.	N.D.	N.D.	N.D.	N.D.	P	/	/	/	/	/	/	/	P
38-137	PCB board assembly - PCB10 patch C	N.D.	N.D.	N.D.	N.D.	N.D.	P	/	/	/	/	/	/	/	P

No.	Test Sample:	Screening Result						Verification Test Result							Verdict
		Pb	Cd	Hg	Cr	Br	Verdict	Pb	Cd	Hg	(Cr VI)		PBBs	PBDEs	
											1000 (d)	0.02 (e)			
Requirement (mg/kg)		b)	b)	b)	b)	b)		1000	100	1000	1000	1000	1000	1000	
MDL (mg/kg)		10	10	10	10	10		5	5	5	5	5	50	50	
38-138	PCB board assembly - PCB10 patch D	N.D.	N.D.	N.D.	N.D.	N.D.	P	/	/	/	/	/	/	/	P
38-139	PCB board assembly - PCB10 patch U	N.D.	N.D.	N.D.	N.D.	N.D.	P	/	/	/	/	/	/	/	P
38-140	PCB board assembly - PCB10 patch BD	N.D.	N.D.	N.D.	N.D.	N.D.	P	/	/	/	/	/	/	/	P
38-141	PCB board assembly - PCB10 green coating	N.D.	N.D.	N.D.	N.D.	N.D.	P	/	/	/	/	/	/	/	P
38-142	PCB board assembly - PCB10 resin	N.D.	N.D.	N.D.	N.D.	2.3 x10 ⁴	V	/	/	/	/	/	N.D.	N.D.	P
38-143	PCB board assembly-PCB10 copper	N.D.	N.D.	N.D.	N.D.	—	P	/	/	/	/	/	/	/	P
38-144	PCB board assembly - PCB10 solder	N.D.	N.D.	N.D.	N.D.	—	P	/	/	/	/	/	/	/	P
39-1	Spring - black coating	N.D.	N.D.	N.D.	N.D.	N.D.	P	/	/	/	/	/	/	/	P
39-2	Spring - the substrate	N.D.	N.D.	N.D.	N.D.	—	P	/	/	/	/	/	/	/	P
40	Metal block	N.D.	N.D.	N.D.	N.D.	—	P	/	/	/	/	/	/	/	P
41-1	Screw assembly - nail 1 coating	N.D.	N.D.	N.D.	N.D.	—	P	/	/	/	/	/	/	/	P
41-2	Screw assembly - nail 1 substrate	N.D.	N.D.	N.D.	N.D.	—	P	/	/	/	/	/	/	/	P
41-3	Screw assembly - nail 2 coating	N.D.	N.D.	N.D.	N.D.	—	P	/	/	/	/	/	/	/	P
41-4	Screw assembly - nail 2 substrate	N.D.	N.D.	N.D.	N.D.	—	P	/	/	/	/	/	/	/	P
41-5	Screw assembly - nail 3 coating	N.D.	N.D.	N.D.	N.D.	—	P	/	/	/	/	/	/	/	P
41-6	Screw assembly - nail 3 substrate	N.D.	N.D.	N.D.	N.D.	—	P	/	/	/	/	/	/	/	P
41-7	Screw assembly - nail 4 plating	N.D.	N.D.	N.D.	N.D.	—	P	/	/	/	/	/	/	/	P

No.	Test Sample:	Screening Result						Verification Test Result							Verdict
		Pb	Cd	Hg	Cr	Br	Verdict	Pb	Cd	Hg	(Cr VI)		PBBs	PBDEs	
											1000 (d)	0.02 (e)			
Requirement (mg/kg)		b)	b)	b)	b)	b)		1000	100	1000	1000	1000	1000	1000	
MDL (mg/kg)		10	10	10	10	10		5	5	5	5	5	50	50	
41-8	Screw assembly - nail 4 substrate	N.D.	N.D.	N.D.	N.D.	—	P	/	/	/	/	/	/	/	P
41-9	Screw assembly - nail 5 coating	N.D.	N.D.	N.D.	N.D.	—	P	/	/	/	/	/	/	/	P
41-10	Screw assembly - nail 5 substrate	N.D.	N.D.	N.D.	N.D.	—	P	/	/	/	/	/	/	/	P
41-11	Screw assembly - nail 6 coating	N.D.	N.D.	N.D.	N.D.	—	P	/	/	/	/	/	/	/	P
41-12	Screw assembly - nail 6 substrate	N.D.	N.D.	N.D.	N.D.	—	P	/	/	/	/	/	/	/	P
41-13	Screw assembly - nail 7 coating	N.D.	N.D.	N.D.	1456	—	V	/	/	/	/	Negative	/	/	P
41-14	Screw assembly - nail 7 substrate	N.D.	N.D.	N.D.	N.D.	—	P	/	/	/	/	/	/	/	P
41-15	Screw assembly - nail 8 coating	N.D.	N.D.	N.D.	851	—	V	/	/	/	/	Negative	/	/	P
41-16	Screw assembly - nail 8 substrate	N.D.	N.D.	N.D.	N.D.	—	P	/	/	/	/	/	/	/	P
41-17	Screw assembly - nail 9 coating	N.D.	N.D.	N.D.	N.D.	—	P	/	/	/	/	/	/	/	P
41-18	Screw assembly - nail 9 substrate	N.D.	N.D.	N.D.	N.D.	—	P	/	/	/	/	/	/	/	P
41-19	Screw assembly - nail 10 black coating	N.D.	N.D.	N.D.	N.D.	N.D.	P	/	/	/	/	/	/	/	P
41-20	Screw assembly - nail 10 substrate	N.D.	N.D.	N.D.	N.D.	—	P	/	/	/	/	/	/	/	P
41-21	Screw assembly - nail 11 black coating	N.D.	N.D.	N.D.	N.D.	N.D.	P	/	/	/	/	/	/	/	P
41-22	Screw assembly - nail 11 substrate	N.D.	N.D.	N.D.	N.D.	—	P	/	/	/	/	/	/	/	P

No.	Test Sample:	Screening Result					Verdict	Verification Test Result					Verdict		
		Pb	Cd	Hg	Cr	Br		Pb	Cd	Hg	(Cr VI)			PBBs	PBDEs
											1000 (d)	0.02 (e)			
Requirement (mg/kg)		b)	b)	b)	b)	b)	1000	100	1000	1000	1000	1000	1000		
MDL (mg/kg)		10	10	10	10	10	5	5	5	5	5	50	50		

Remarks: a) Screening results, "P" means "Pass", "F" means "Fail", "V" means "the need for chemical confirmation."
 b) XRF Screening limits scope : Pb : $P \leq 700 < V < 1300 \leq F$; Cd : $P \leq 70 < V < 130 \leq F$; Hg : $P \leq 700 < V < 1300 \leq F$; Cr : $P \leq 700 < V < 1300 \leq F$; Br : $P \leq 300 < V < 1300 \leq F$; XRF does not apply to the direct determination of hexavalent chromium plating.
 c) "N.D." means "Not Detected"; "/" means "untested"; "—" means "not applicable"
 d) It is the hexavalent chromium limit of Metal substrates or non-metallic materials.
 e) It is the hexavalent chromium limit of metal plating.
 "Negative" means "Absence of Cr(VI)"; "Positive" means the Cr(VI) concentration detected in the boiling water extraction solution is equal to or greater than 0.02 mg/kg with a sample surface area of 50 cm² used.
 " ▲ 1" : according to the 2011 /65 /EU Appendix III section 7 (a), Lead in high melting temperature type solders (i.e. lead-based alloys containing 85 % by weight or more lead) can be exempted.
 " ▲ 2" : according to the 2011 /65 /EU Appendix III section 6 (c), copper alloy containing up to 4% lead by weight can be exempted.

Sample Photo



Remarks: The original report No. RZRS2016-0114 issued on Jan 10, 2017 was first amended on Feb 09, 2017. The changes included: the client address, test sample, sample type/model, and sample description. The involved pages were page 1 and 39. The report No. was changed from RZRS2016-0114 into RZRS2016-0114(XG1).

Parts photo		
 <p>1</p>	 <p>2</p>	 <p>3</p>
 <p>4</p>	 <p>5</p>	 <p>6</p>
 <p>7</p>	 <p>8</p>	 <p>9</p>
 <p>10</p>	 <p>11</p>	 <p>12</p>

Parts photo



13



14



15



16



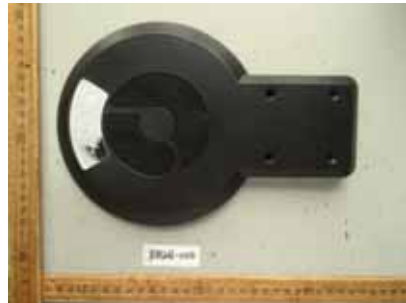
17



18



19



20



21



22



23



24

Parts photo



25



26



27



28



29



30



31



32



33




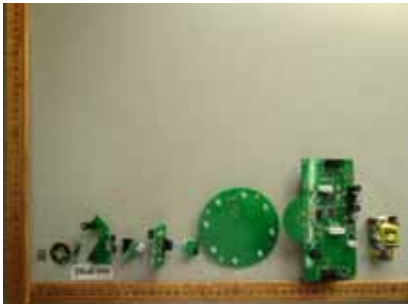



34



35



36

Parts photo		
 <p>37</p>	 <p>38</p>	 <p>39</p>
 <p>40</p>	 <p>41</p>	<p>—</p>

-----End of Report-----

本报告检测结果仅对所检样品负责。报告无检测单位印章无效。未经本单位书面同意，不得部分复制本报告。报告涂改无效。对检测报告若有异议，应于收到报告之日起十五日内向检测单位提出。

The test results presented in this report relate only to the object tested. The test report is invalid without the official stamp of CVC. This report shall not be reproduced, except in full, without the written approval of the issuing testing laboratory. The test report is invalid if altered. Objections to the test report must be submitted to CVC within 15 days.

威凯检测技术有限公司

Vkan Certification & Testing Co., Ltd

地址：中国广州市科学城开泰大道天泰一路3号（510663）

Address: No.3, Tiantaiyi Road, Kaitai Avenue, Science City, Guangzhou P. R. China (510663)

电话(Tel) : +86-20-32293888 传真(FAX) : +86-20-32293889

E-mail: office@cvc.org.cn http:// www.cvc.org.cn